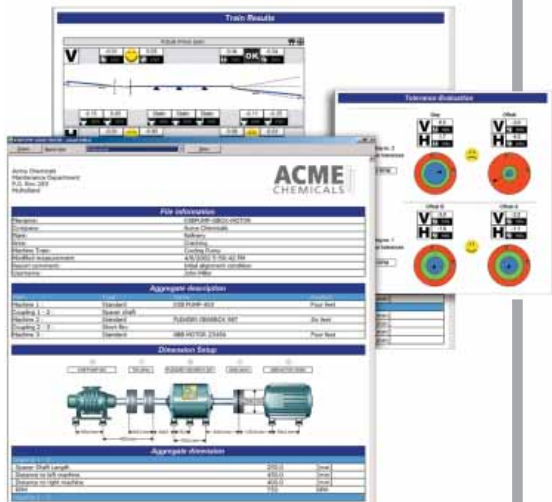


# laser shaft alignment



## Protect your assets

Using PRÜFTECHNIK laser alignment systems, our engineers provide comprehensive shaft alignment measurement service for your rotating machines that is unrivalled worldwide. Whether you have complex machine trains, vertical machines, or any number of simple pump and motor sets to align, in standard or intrinsically safe environments, PRÜFTECHNIK can provide a service for your company.

The measurement systems we use are calibrated to national and international standards which guarantee that measurements made are both accurate and repeatable. We provide detailed reports which clearly show, both graphically and numerically, the alignment condition as found and as left at both the coupling and foot positions, within specified customer tolerances.

## Reliability starts with accurate alignment

When misaligned, the loading of shafts dramatically increases due to the reaction forces created within the coupling. This effect leads to:

- Premature bearing, seal, shaft, or coupling failures
- High bearing temperatures
- Excessive vibration
- Looseness of foundation bolts
- The breaking (or cracking) of shafts at, or close to the in-board bearing
- High power consumption

## Maintenance is the key to success

Let the PRÜFTECHNIK Service team with its dedicated experts and proven laser alignment systems be at the heart of your maintenance program, and you will expect the following benefits:

- Improved plant operating life and reliability.
- Reduced spare parts inventory
- Reduced overall maintenance costs
- Improved plant operating safety.
- Reduced cost of power consumption on plant operation

In brief, your costs will decline, and you will realize significant business value.